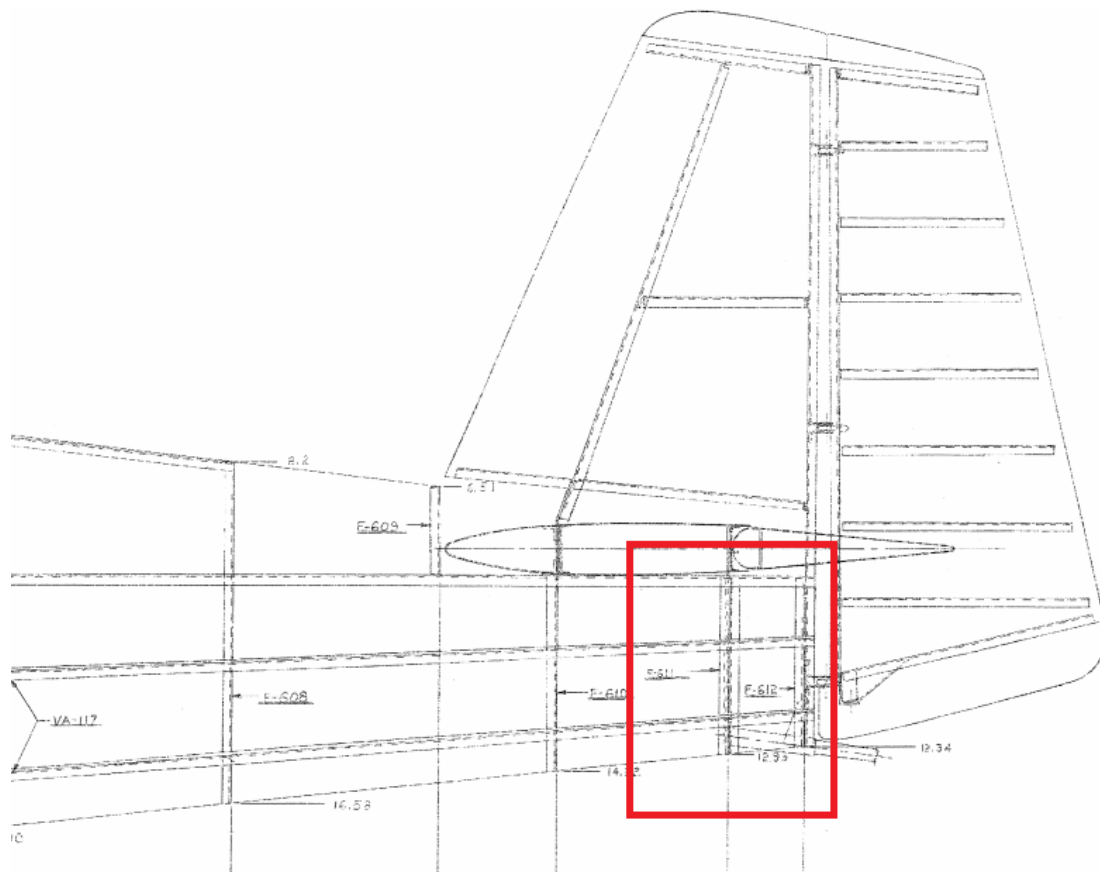
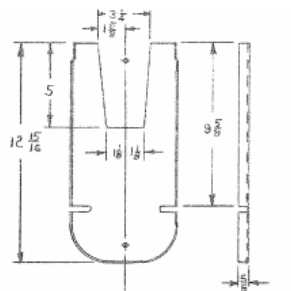


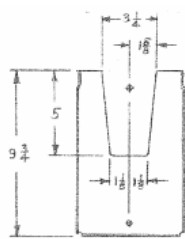
If Fuselage section shown above is configured for "A" model it is acceptable to leave as is if converting to tail wheel. If converting from tail wheel to tri gear reinforcing plate must be added.



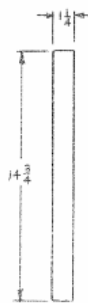
The aft two bulkheads of the fuselage will need to be inspected and possibly modified depending on original build configuration.



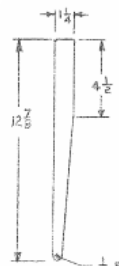
F-611A BULKHEAD 1/4 SCALE
032 2024-T3



(FOR TRI-GEAR)
F-611B BULKHEAD 1/4 SCALE
032 2024-T3

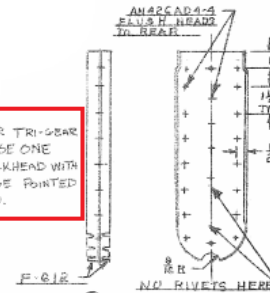


F-611C BAR
127.125 2024-T4
2 REQ'D

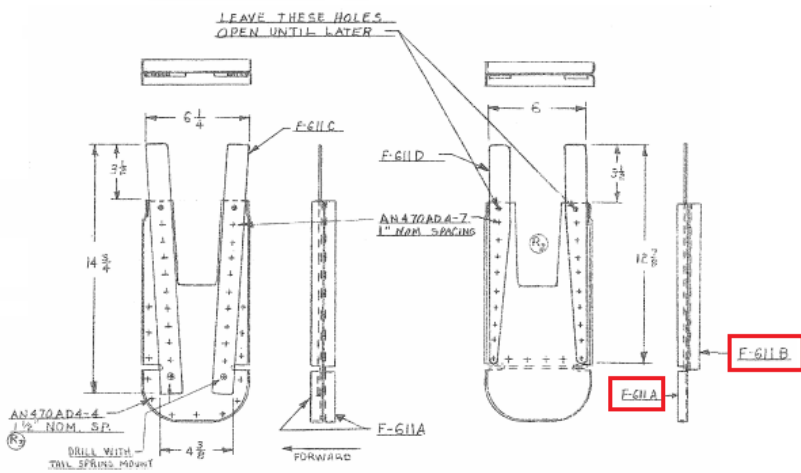


F-611D BAR
127.125 2024-T4
2 REQ'D

NOTE: FOR TRI-GEAR
RV-6 USE ONE
Ⓢ F-612 BULKHEAD WITH
THE FLANGE POINTED
FORWARD.



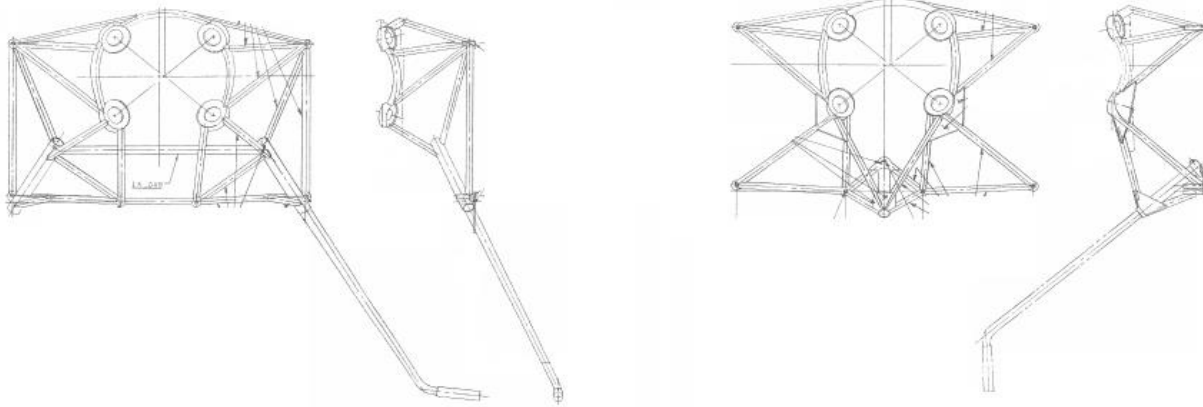
F-612 BULKHEAD ASSY
FOR TAIL WHEEL RV-6



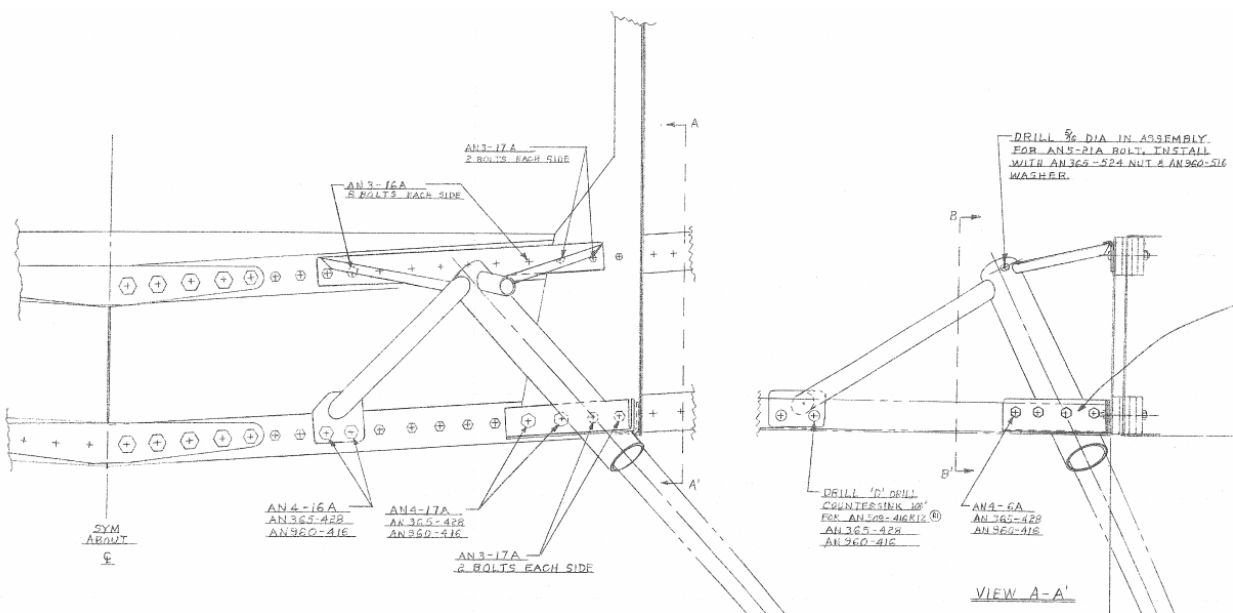
F-611 BULKHEAD ASSY
FOR TAIL WHEEL RV-6

F-611T BULKHEAD ASSY
FOR TRI-GEAR RV-6

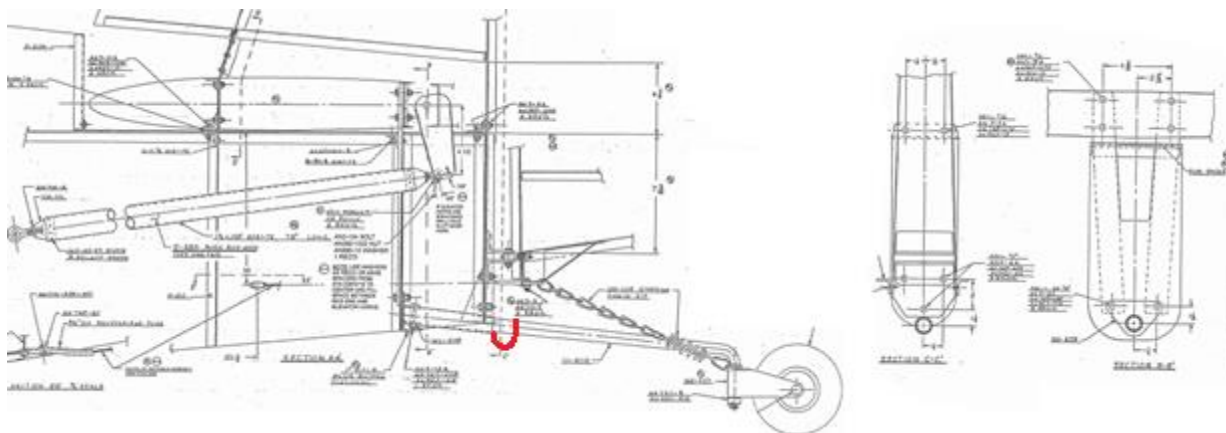
If converting from tail wheel to tri gear no change is necessary. If fuselage was originally configured as shown above for the "A" model, bulkheads and F-611 bars will need to be replaced and reconfigured for tail wheel.



Main landing gear for tail wheel and nose gear for "A" model are contained in engine mount. If converting it will require a new mount be installed for desired gear configuration.



Main landing gear mounts for "A" model are bolted to the center section/spar carry through.



Tail wheel mount is bolted to aft bulkheads, if converting to "A" model the tail wheel spring can be replaced with a steel tube with a welded on loop and utilized for tail tie down.