

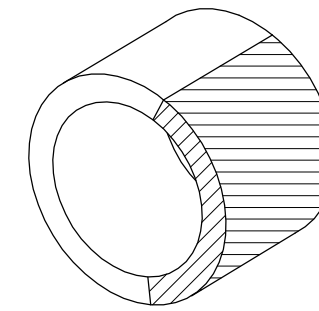
**Step 1:** Make two F-00001 Cable Spacers, one for each cushioned clamp called out in Figure 1. Note there are two different sized cushioned clamps. Cut remnant EA HOSE H151 from Section 49 the length of a cushioned clamp. Remove part of the circumference as shown in Figure 2 so the cable spacer will be just long enough to wrap around the inside of the cushioned clamp.

**Step 2:** Orient the handle of the Choke Cable so that the longer of the two cables is on the right side, and the handle is vertical when locked. Secure the choke cable to the F-1202A-1 Instrument Panel by installing the nut and washer shown in Figure 1.

**Step 3:** Capture the Choke Cable with the cushioned clamp and corresponding F-00001 Cable Spacer as shown in Figure 1. Install the cushioned clamp to the F-1202B Panel Base as shown in Figure 1.

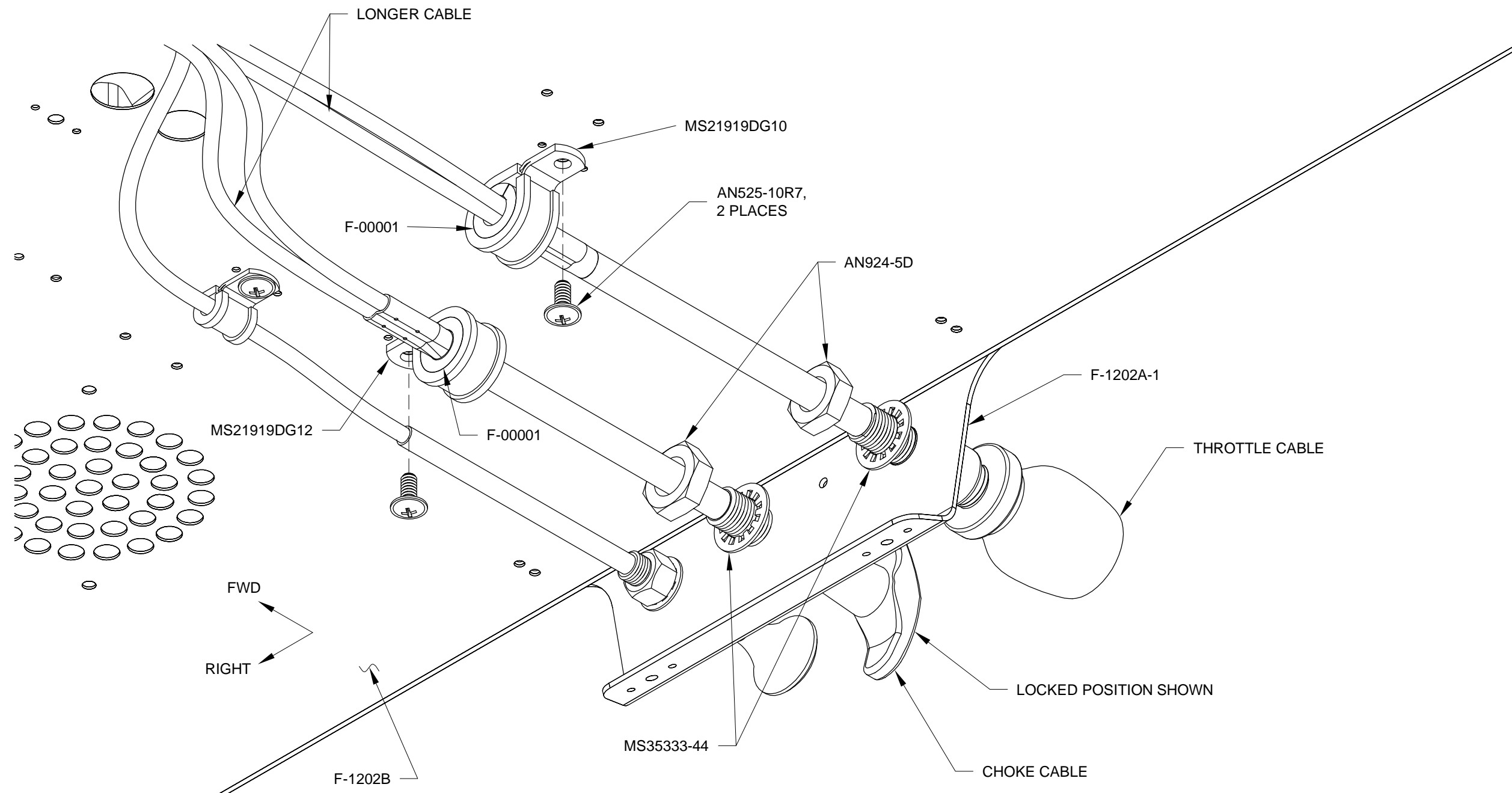
**Step 4:** Orient the handle of the Throttle Cable so that the longer of the two cables is on the right side. Secure the throttle cable to the F-1202A-1 Instrument Panel by installing the nut and washer shown in Figure 1.

**Step 5:** Capture the Throttle Cable with the cushioned clamp and corresponding F-00001 Cable Spacer as shown in Figure 1. Install the cushioned clamp to the F-1202B Panel Base as shown in Figure 1.



REMOVE SHADED AREA  
SIZE AS REQUIRED

**FIGURE 2:**  
CABLE SPACER



**FIGURE 1:**  
CONTROL CABLE MOUNT