

Step 1: Make two F-1201D Battery Spacer from .058X5/16 6061-T6 tube per the dimensions in Figure 1.

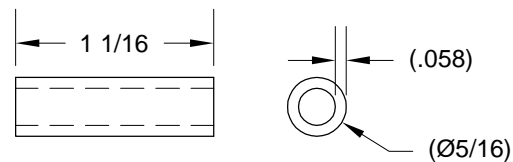


FIGURE 1: MAKING THE BATTERY SPACER

Step 2: Make four F-1257B Battery Anti-Chafe Strips XX inches long from MS21266-1N Grommet.

Step 2: Place the four F-1257B Battery Anti-Chafe Strips on top of the F-1257 Rudder Pedal Support Channel flanges. Slide the ES PC680 Odyssey Battery into the opening in the firewall assembly. See Figure 2.

Step 3: Secure the ES PC680 Odyssey Battery in place using the F-1201S Battery Channel, F-1201D Battery Spacers and the hardware called out in Figure 2.

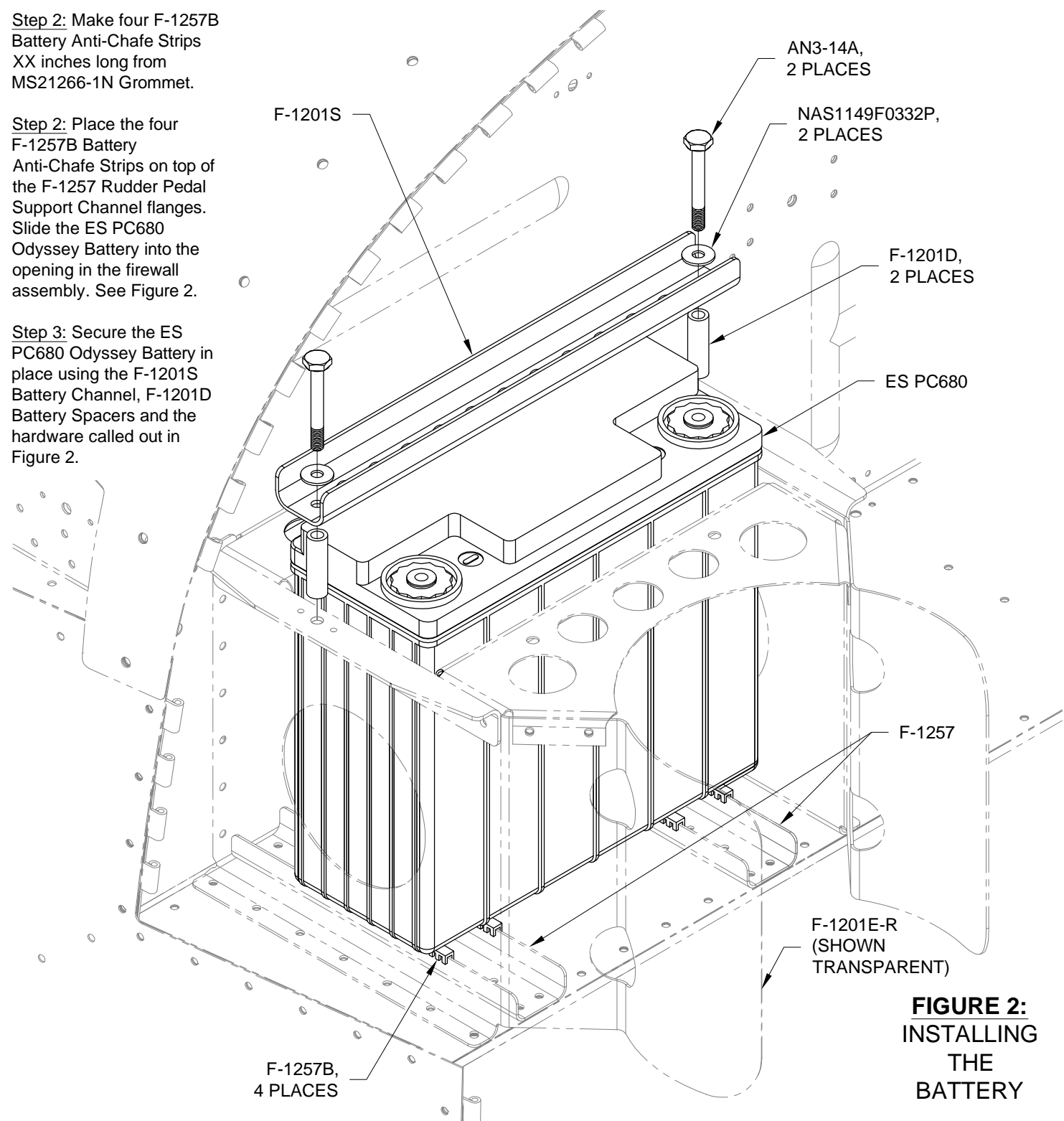


FIGURE 2: INSTALLING THE BATTERY

Step 4: Install the ES 24115 Master Relay, 992 819 Starter Relay, 100434-000 Manifold Pressure Sensor, 100411-000 Fuel Pressure Sensor and 965 347 Rectifier Regulator to the F-1201A Firewall Upper and F-1201B Firewall Shelf using the hardware callouts in Figure 3.

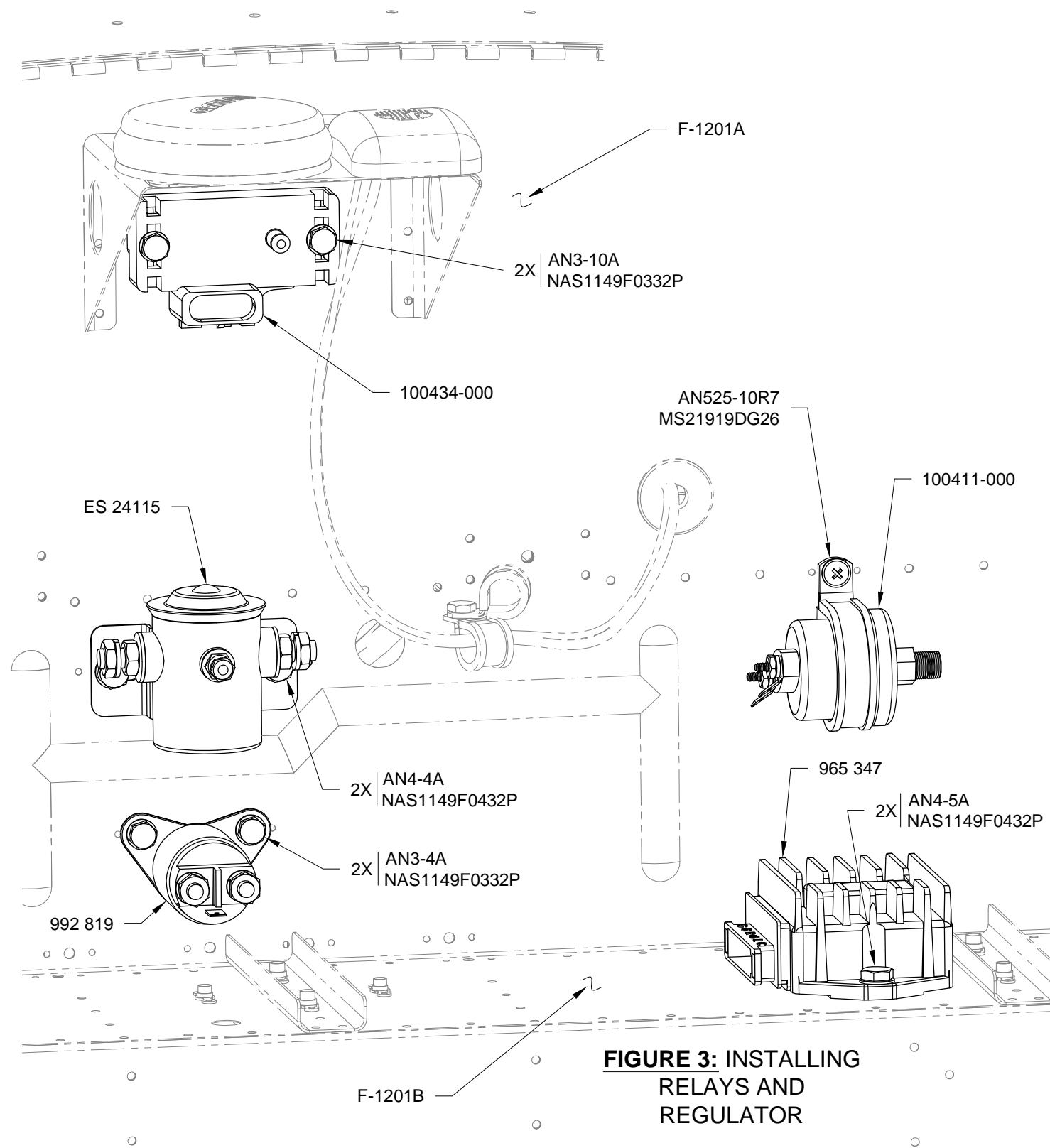


FIGURE 3: INSTALLING RELAYS AND REGULATOR