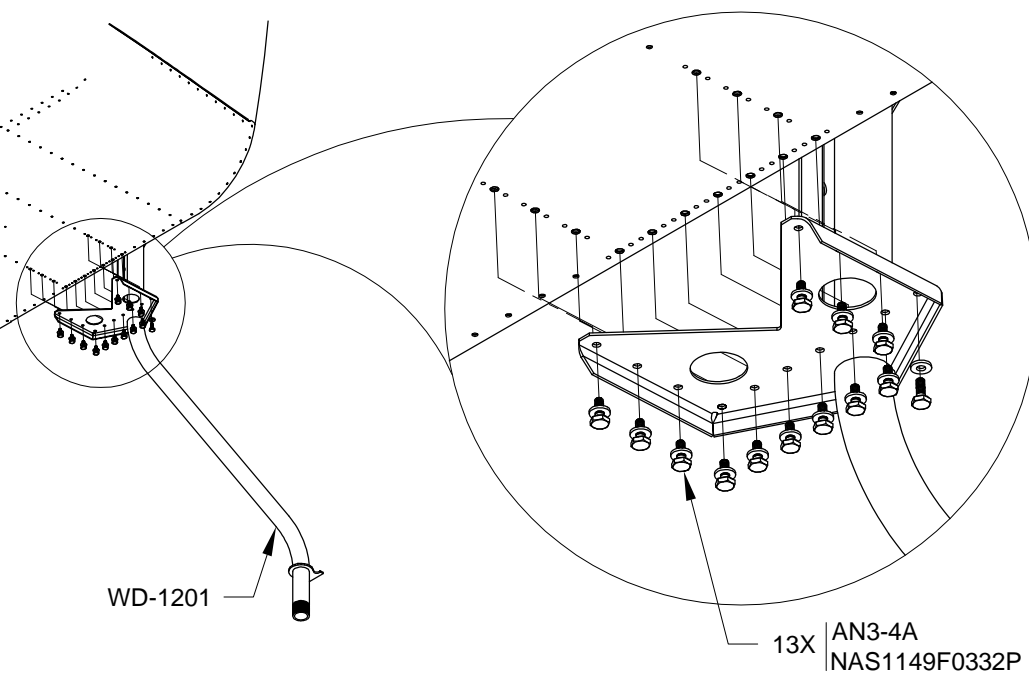


**Step 1:** Attach the WD-1201 Nose Gear Assembly to the fuselage using the hardware called out in Figure 1.



**FIGURE 1: ATTACHING THE NOSE GEAR**

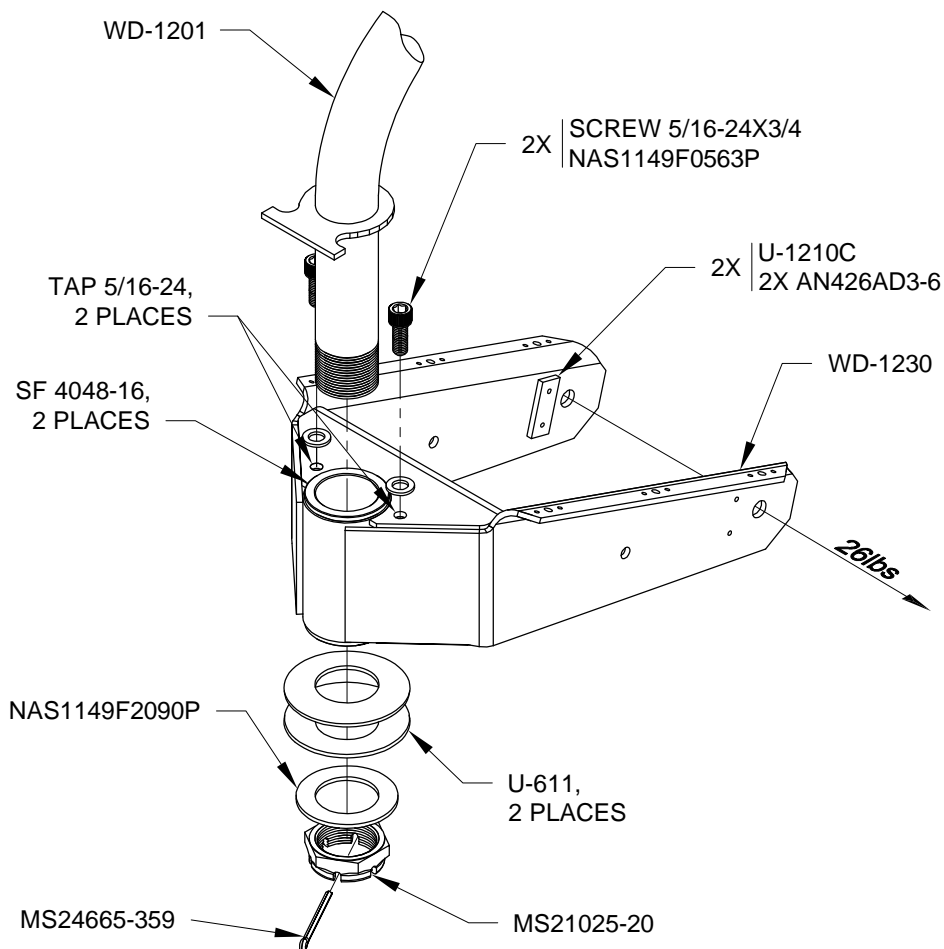
**Step 2:** Machine countersink the outboard sides of the WD-1230 Nose Fork Assembly for the head of an AN426 rivet.

Rivet the U-1210C Anti-Rotation Plates to the Nose Fork Assembly.

**Step 3:** Tap 5/16-24 the holes indicated in Figure 2. Thread screws into the WD-1230 Nose Fork Assembly as shown in Figure 2.

**Step 4:** Grease the SF 4048-16 Bronze Bushings with Aeroshell #5 or equivalent. Slide the WD-1230 Nose Fork Assembly, the two U-611 Washers, and the NAS1149F2090P Washer (The U-611 washers are "cupped", and to function properly, the outside perimeter of both washers must be in contact with each other when installed) onto the WD-1201 Nose Gear Assembly. Finally, thread on the MS21025-20 Nut.

**Step 5:** Thread safety wire through the bolt holes used to secure the Nose Wheel and Tire Assembly to the WD-1230 Nose Fork Assembly, then attach a spring scale to the end of the safety wire. Tighten the MS21025-20 Nut until a force of 26 lbs begins to rotate the Nose Fork Assembly around the spindle. Use the nut as a drill guide and drill #30 both sides of the nose gear leg for the cotter pin. Deburr as required then secure the nut with the cotter pin called-out in Figure 2.

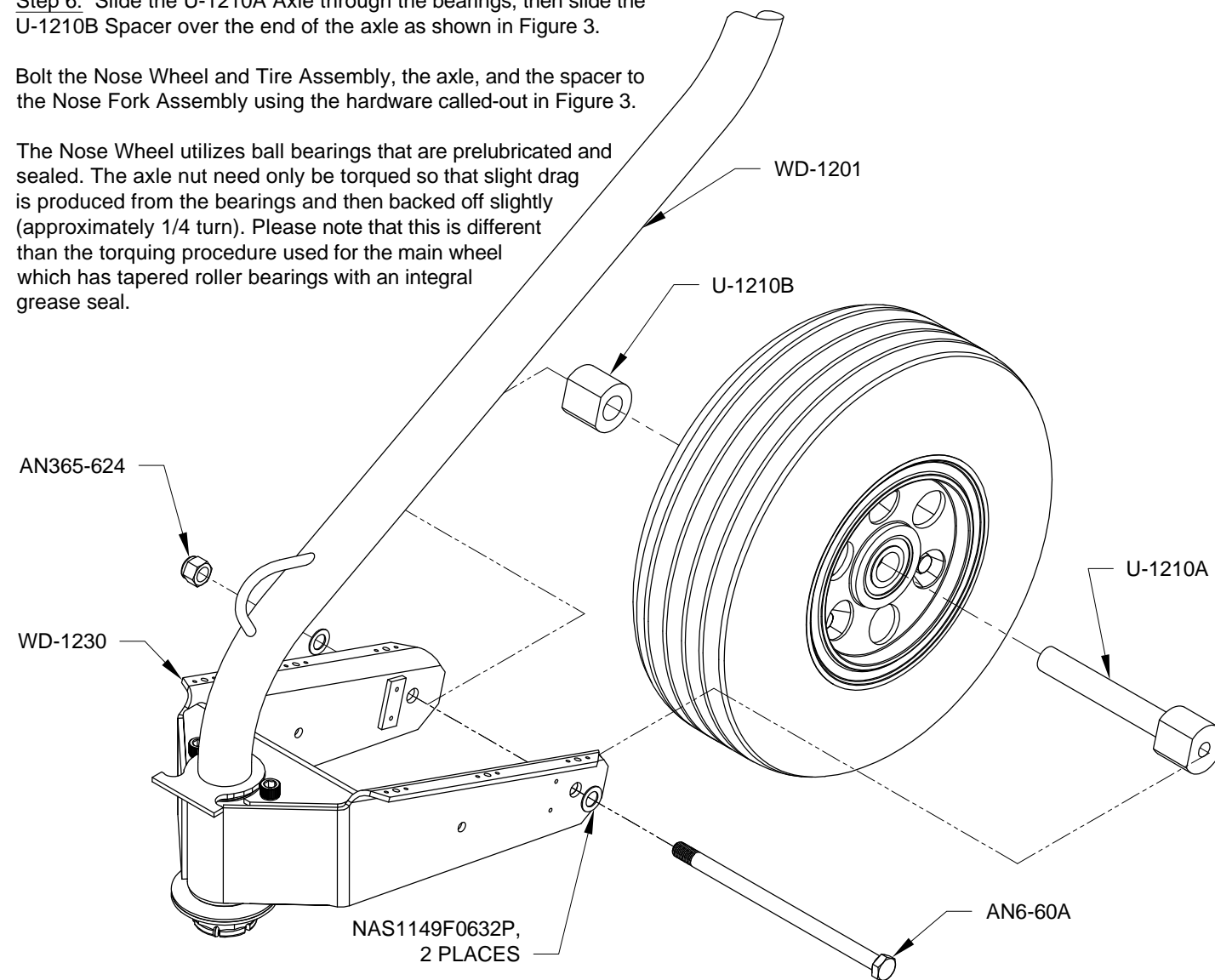


**FIGURE 2: INSTALLING THE NOSE FORK ASSEMBLY**

**Step 6:** Slide the U-1210A Axle through the bearings, then slide the U-1210B Spacer over the end of the axle as shown in Figure 3.

Bolt the Nose Wheel and Tire Assembly, the axle, and the spacer to the Nose Fork Assembly using the hardware called-out in Figure 3.

The Nose Wheel utilizes ball bearings that are prelubricated and sealed. The axle nut need only be torqued so that slight drag is produced from the bearings and then backed off slightly (approximately 1/4 turn). Please note that this is different than the torquing procedure used for the main wheel which has tapered roller bearings with an integral grease seal.



**FIGURE 3: INSTALLING THE NOSE WHEEL AND TIRE ASSEMBLY**

**NOTE:** The fuselage may now be lowered onto the nose wheel.

**Step 7:** Fill the brake system with the brake fluid recommended in the wheel and brake package instructions. Follow the instructions in the wheel and brake package for bleeding the brake system (note that the loop around the base of the main gear legs is standard for RV aircraft and has not hindered the removal of air from the brake system).