

FUEL PICK-UP TUBE ANTI-ROTATION BRACKET

APPLICABILITY

All RV aircraft with wing fuel tanks and fixed fuel pick-up tubes should have anti-rotation brackets installed. This does not apply to flexible "flop-tube" pick-up tubes designed for inverted flight.

Wing Tanks, also see **SB 06-2-23**.

MODIFICATION DETAILS

Step 1: Fabricate the fuel pick-up anti-rotation brackets shown in Figure 1.

Step 2: Remove the fuel tank access plate and fuel pick-up assembly.

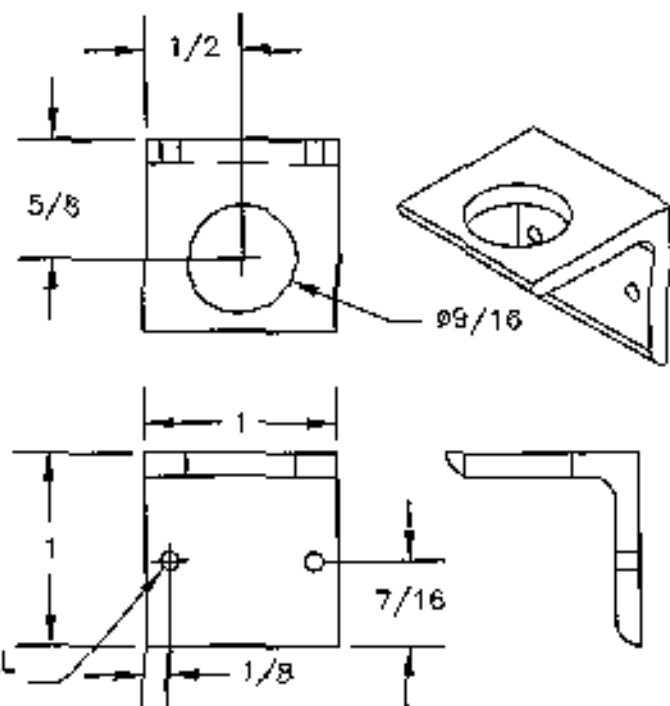
Step 3: Remove the fuel pick-up tube from the bulkhead fitting mounted in the access plate. Install the anti-rotation bracket on the access plate, using the bulkhead fitting and Figures 1 and 2 to locate it correctly. Use the #30 holes in the bracket to match-drill the access plate.

Step 4: Deburr the holes. Apply fuel tank sealant between the bracket and the access plate and rivet them together with two AN470AD4-6 rivets.

Step 5: Re-install the pick-up tube on the bulkhead fitting.

Step 6: Apply fuel tank sealant to the access cover and fuel tank rib and reinstall the access plate/fuel pick-up assembly.

FIGURE 1



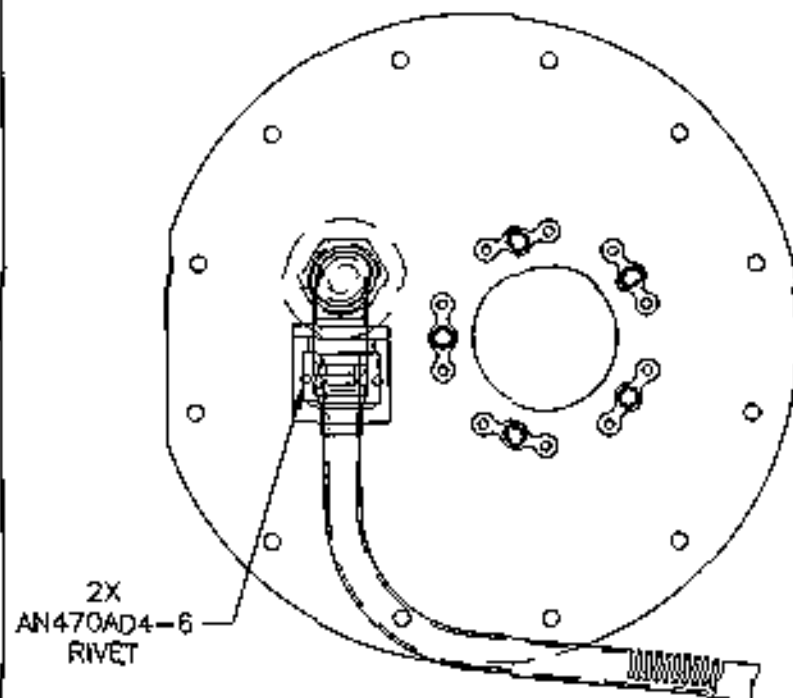
FUEL PICK-UP
ANTI-ROTATION BRACKET

FULL SCALE

1 REQ'D PER TANK

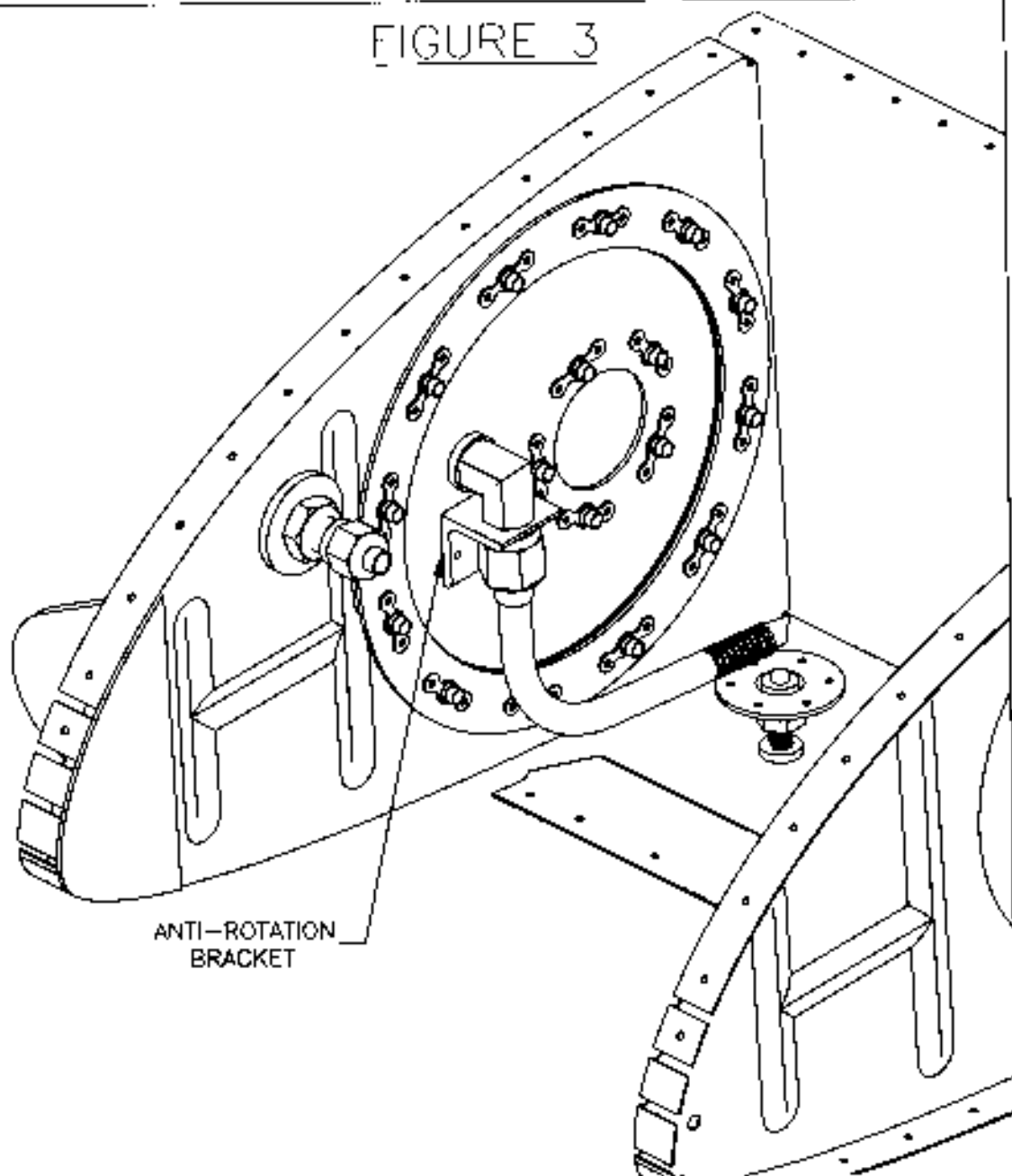
MAKE FROM: A46-125X1X1

FIGURE 2



ANTI-ROTATION BRACKET INSTALLATION DETAIL
VIEW LOOKING NORMAL TO FUEL TANK
ACCESS PLATE

FIGURE 3



ANTI-ROTATION
BRACKET

ANTI-ROTATION BRACKET INSTALLATION DETAIL -
ISOMETRIC VIEW OF LEFT FUEL TANK
(VENT LINE AND SKIN NOT SHOWN FOR
CLARITY)